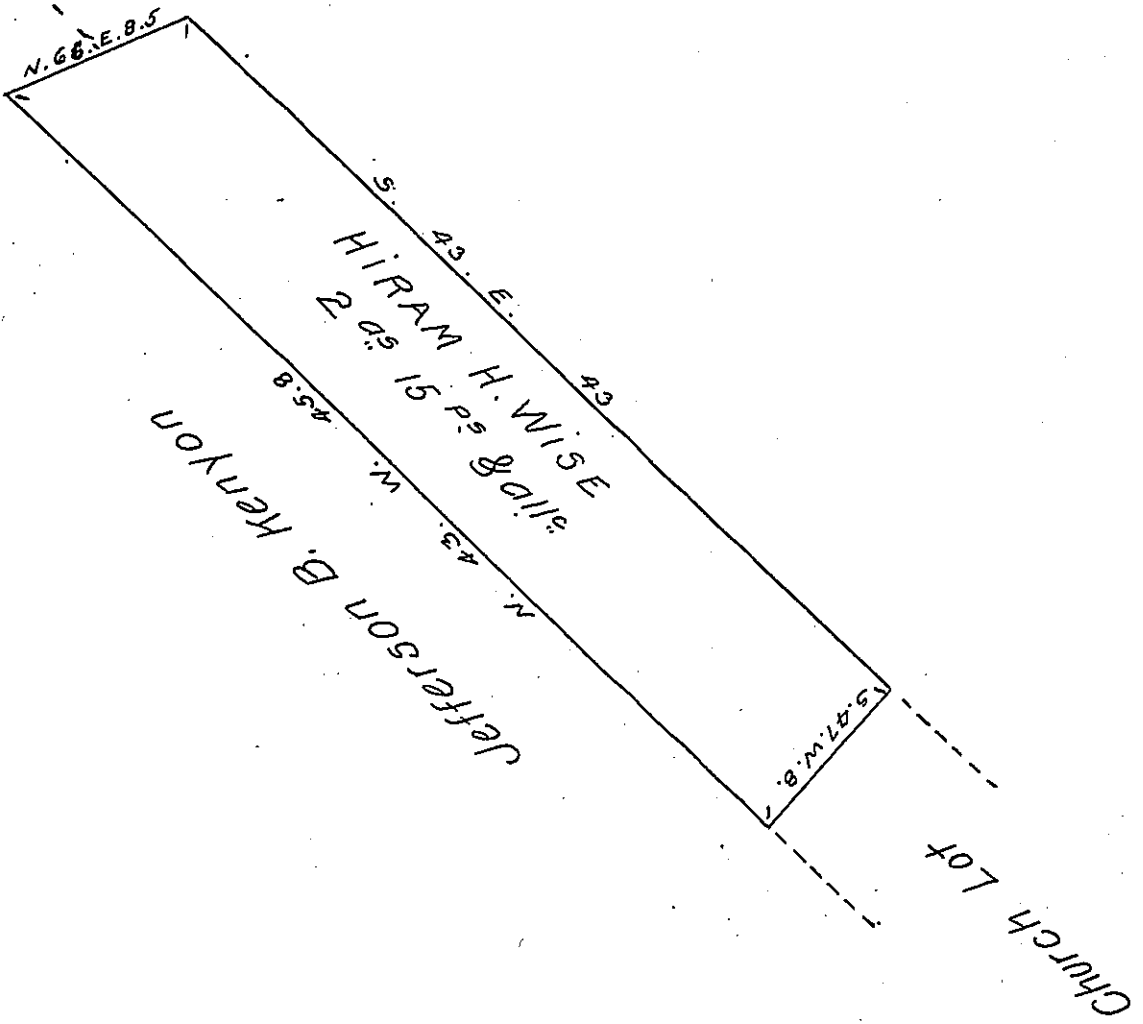


FORM NO 1.



Draft of a tract of land situate in the township of Blakely. Contain-
 ing two acres and fifteen perches and All^{cs}. being part of A larger
 tract surveyed to Edward London. Sept. 8. 1804. in pursuance
 of his warrant dated Jan. 27. 1804. and Certified by George Haines

Surveyed the Above the 2nd day of September 1867 to Hiram
 H. Wise for patenting.

John Sturdevant—

Hon. J. M. Campell }
 Surveyor Gen!

The Above Survey examined and approved by me.

Patrick Blewitt

C. S.

IN TESTIMONY that the above is a copy of the original remaining on file in
 the Department of Internal Affairs of Pennsylvania, made
 conformably to an Act of Assembly approved the 16th day of
 February, 1833, I have hereunto set my Hand and caused
 the Seal of said Department to be affixed at Harrisburg,
 this third day of December 1907.

Newry Houch
 Secretary of Internal Affairs.